

CORPORATE & PRODUCTS



MOTOVARIO®

HEART OF MOTION

a **TECO Group** company

MOTOVARIO *TIMELINE*

3 filiali:
Motovario Corporation, Atlanta - USA
Motovario GmbH, Germania
Motovario SA, Francia
3 subsidiaries:
Motovario Corporation, Atlanta - USA
Motovario GmbH, Germany
Motovario SA, France

FONDAZIONE
FOUNDATION

1965

La prima filiale:
Motovario Scandinavia A/S, Danimarca
The first subsidiary:
Motovario Scandinavia A/S, Denmark

1996

1997

1966

Variatori
Variators

1988

Coassiali e Ortogonali
Helical and Helical bevel

1987

Vite senza Fine
Worm gear reducers

1992

NMRV
NMRV

1997

Motori elettrici
asincroni trifase
*Three phase asynchronous
electric motors*

DRIVING INDUSTRIES

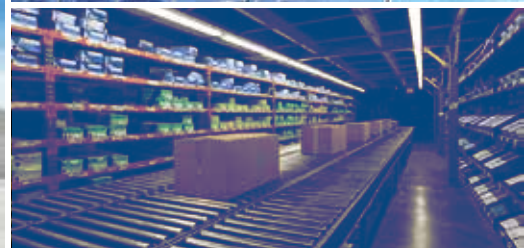
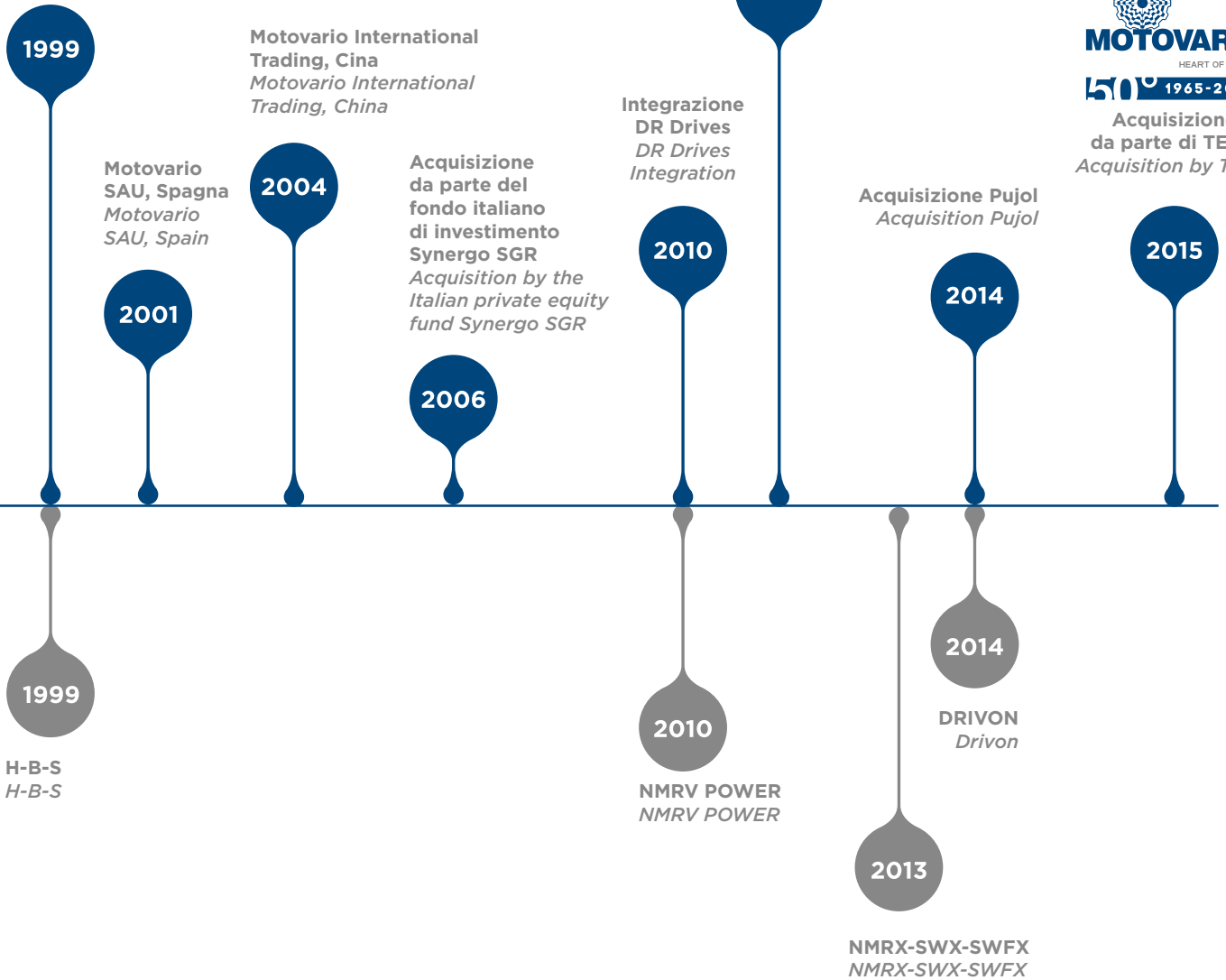


Acquisizione Spaggiari Trasmissioni®
 Motovario Limited, Regno Unito
 Acquisition Spaggiari Trasmissioni®
 Motovario Limited, UK

Motovario Gear Solutions Private Limited, India
 Motovario Gear Solutions Private Limited, India



Acquisizione da parte di TECO
 Acquisition by TECO



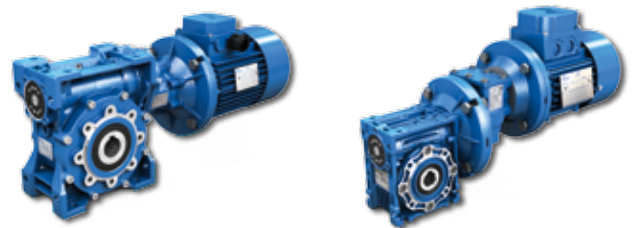


SERIES



Riduttori e Motoriduttori a vite senza fine
Worm geared motors and gear reducers

Grandezze / Sizes:	063-075-090-110
M_{N2} ($n_1 = 1400$ rpm) Momento Nominale / Nominal Torque	725 Nm
Rapporti / Ratio:	7,5 ÷ 100
Potenze / Power:	fino a / up to 12 kW
Certificazioni / Certifications:	ATEX 2GD/3GD



NMRV POWER®- HW
NMRV + HA31

Riduttori e Motoriduttori a vite senza fine con precoppia
Helical worm geared motors and gear reducers

Grandezze / Sizes:	040-050-063-075 090-110
M_{N2} ($n_1 = 1400$ rpm) Momento Nominale / Nominal Torque	1.189 Nm
Rapporti / Ratio:	22,1 ÷ 1.083
Potenze / Power:	fino a / up to 1,85 kW
Certificazioni / Certifications:	ATEX 2GD/3GD



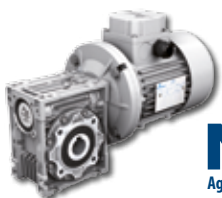
NMRV®
Riduttori e Motoriduttori a vite senza fine
Worm geared motors and gear reducers

Grandezze / Sizes:	025-030-040-050 130-150
M_{N2} ($n_1 = 1400$ rpm) Momento Nominale / Nominal Torque	1.550 Nm
Rapporti / Ratio:	5 ÷ 100
Potenze / Power:	fino a / up to 15 kW
Certificazioni / Certifications:	ATEX 2GD/3GD



SW
Riduttori e Motoriduttori a vite senza fine
Worm geared motors and gear reducers

Grandezze / Sizes:	030-040-050-063-075 090-105
M_{N2} ($n_1 = 1400$ rpm) Momento Nominale / Nominal Torque	630 Nm
Rapporti / Ratio:	5 ÷ 100
Potenze / Power:	fino a / up to 11 kW



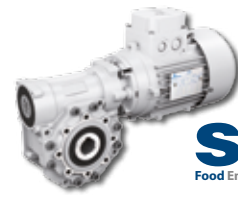
Motoriduttori a vite senza fine
Worm geared motors

Grandezze / Sizes:	040 - 050 063 - 075 - 090
M_{N2} ($n_1 = 1400$ rpm) Momento Nominale / Nominal Torque	396 Nm
Rapporti / Ratio:	5 ÷ 100
Potenze / Power:	fino a / up to 4,8 kW



Motoriduttori a vite senza fine
Worm geared motors

Grandezze / Sizes:	030 - 040 050 - 063 - 075 090 - 105
M_{N2} ($n_1 = 1400$ rpm) Momento Nominale / Nominal Torque	660 Nm
Rapporti / Ratio:	5 ÷ 100
Potenze / Power:	fino a / up to 4,8 kW



Motoriduttori a vite senza fine
Worm geared motors

Grandezze / Sizes:	030 - 040 050 - 063 - 075 090 - 105
M_{N2} ($n_1 = 1400$ rpm) Momento Nominale / Nominal Torque	660 Nm
Rapporti / Ratio:	5 ÷ 100
Potenze / Power:	fino a / up to 4,8 kW



SERIES



H-CH-IH

alluminio *aluminum*

Riduttori e Motoriduttori coassiali

Helical geared motors and gear reducers

Grandezze / <i>Sizes</i> :	A30-A40-A50-A60
M_{N2} ($n_1 = 1400$ rpm) Momento Nominale / <i>Nominal Torque</i>	500 Nm
Rapporti / <i>Ratio</i> :	1,33 ÷ 353,98
Potenze / <i>Power</i> :	fino a / <i>up to</i> 4,8 kW
Certificazioni / <i>Certifications</i> :	ATEX 3GD



H-PH-CH-IH

ghisa *cast iron*

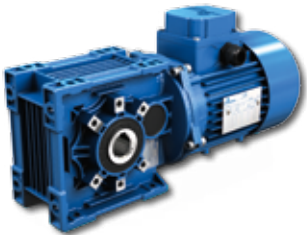
Riduttori e Motoriduttori coassiali

Helical geared motors and gear reducers

Grandezze / <i>Sizes</i> :	030-040-050-060-080-100-125-140
M_{N2} ($n_1 = 1400$ rpm) Momento Nominale / <i>Nominal Torque</i>	8.000 Nm
Rapporti / <i>Ratio</i> :	1,23 ÷ 282,1
Potenze / <i>Power</i> :	fino a / <i>up to</i> 45 kW
Certificazioni / <i>Certifications</i> :	ATEX 2GD/3GD



SERIES



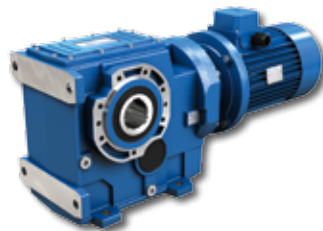
B-CB-IB

alluminio *aluminum*

Riduttori e Motoriduttori ortogonali

Helical bevel geared motors and gear reducers

Grandezze / <i>Sizes</i> :	A40-A50-A60
M_{N2} ($n_1 = 1400$ rpm) Momento Nominale / <i>Nominal Torque</i>	450 Nm
Rapporti / <i>Ratio</i> :	7,62 ÷ 442,76
Potenze / <i>Power</i> :	fino a / <i>up to</i> 4,8 kW
Certificazioni / <i>Certifications</i> :	ATEX 3GD



B-PB-CB-IB

ghisa *cast iron*

Riduttori e Motoriduttori ortogonali

Helical bevel geared motors and gear reducers

Grandezze / <i>Sizes</i> :	060-080-100-125-140-150-160
M_{N2} ($n_1 = 1400$ rpm) Momento Nominale / <i>Nominal Torque</i>	13.000 Nm
Rapporti / <i>Ratio</i> :	5,71 ÷ 187,24
Potenze / <i>Power</i> :	fino a / <i>up to</i> 90 kW
Certificazioni / <i>Certifications</i> :	ATEX 2GD/3GD



SERIES **NEW**



S-PS-CS-IS

ghisa *cast iron*

Riduttori e Motoriduttori pendolari

Shaft mounted geared motors and gear reducers

Grandezze / <i>Sizes</i> :	050-060-080-100-125-140-150
M_{N2} ($n_1 = 1400$ rpm) Momento Nominale / <i>Nominal Torque</i>	9500 Nm
Rapporti / <i>Ratio</i> :	4,06 ÷ 394,69
Potenze / <i>Power</i> :	fino a / <i>up to</i> 45 kW
Certificazioni / <i>Certifications</i> :	ATEX 2GD/3GD (fino a gr.125/ <i>up to size 125</i>) ATEX3GD (a richiesta per gr. 140-150/ <i>on request for sizes 140-150</i>)



SERIES NEW



PBH

ghisa cast iron

Riduttori e Motoriduttori Paralleli e Ortogonali
Parallel helical and Bevel helical geared motors and gear reducers

Grandezze / Sizes:	180 - 200 - 225 - 250 280 - 320 - 355
Stadi di Riduzione Reduction Stages:	1 - 4 (Parallelo/Parallel) 2 - 4 (Ortogonale/Bevel)
M_{N2} ($n_1 = 1400$ rpm) Momento Nominale / Nominal Torque	78.000 Nm
Rapporti / Ratio:	1,25 ÷ 760
Certificazioni / Certifications:	ATEX 3GD Su richiesta / On request



SERIES



TXF alluminio aluminum

Motovariatori
Motovariators

Grandezze / Sizes:	002-005-010
M_{N2} ($n_1 = 1400$ rpm) Momento Nominale / Nominal Torque	12 Nm
Rapporti / Ratio:	109 ÷ 2.000
Potenze / Power:	fino a / up to 2,2 kW



S ghisa cast iron

Motovariatori
Motovariators

Grandezze / Sizes:	003-005-010-020 030-050-100
M_{N2} ($n_1 = 1400$ rpm) Momento Nominale / Nominal Torque	144 Nm
Rapporti / Ratio:	122 ÷ 2.000
Potenze / Power:	fino a / up to 9,2 kW
Certificazioni / Certifications:	ATEX 2GD/3GD



VHA alluminio aluminum

Motovariariduttori
Motovariator-gear reducers

Grandezze / Sizes:	TXF+A30-A40 A50-A60
M_{N2} ($n_1 = 1400$ rpm) Momento Nominale / Nominal Torque	480 Nm
Rapporti / Ratio:	0,8 ÷ 1.500
Potenze / Power:	fino a / up to 2,2 kW



VH ghisa cast iron

Motovariariduttori
Motovariator-gear reducers

Grandezze / Sizes:	S+030-040-050 060-080-100-120
M_{N2} ($n_1 = 1400$ rpm) Momento Nominale / Nominal Torque	5.000 Nm
Rapporti / Ratio:	0,6 ÷ 1.541,7
Potenze / Power:	fino a / up to 9,2 kW
Certificazioni / Certifications:	ATEX 2GD/3GD



SERIES **NEW**



Nuova gamma IE3/New IE3 range TS-TH-TP-TBS-TBH-TBP-D-DB-S-HSE

Motori elettrici
Electric motors

Grandezze / Sizes:	056 ÷ 280
Poli / Poles:	2-4-6-8
Potenze / Power:	fino a / up to 90 kW
Efficienza / Efficiency: (solo / only T-TB)	IE1 fino a / up to 0,55 kW IE2 - da / from 0,75 kW fino a / up to 5,5 kW IE3 - da / from 0,75 kW fino a / up to 90 kW



SERIES



drivon[®]

Motoinverters
Inverter motors

Tipo / Type	DRIVON 230V 1PH/3PH	DRIVON 400V 3PH
Range Alimentazione / Power supply range	(200÷260)V / 50-60Hz	(360÷480)V / 50-60Hz
Grandezze motore / Motor sizes	071 ÷ 090	071 ÷ 132
Range Potenza / Power range [kW]	0,25 ÷ 1,5	0,25 ÷ 5,5
Range Velocità / Speed range	0 ÷ 2500 rpm	0 ÷ 3000 rpm
Bus di campo integrati / Integrated fieldbus	CANopen - Modbus	CANopen - Modbus

SUBSIDIARIES



Germany
France
Spain
United Kingdom
Denmark

USA
China
India

Italy
Australia
Benelux
Bulgaria
China
Finland

France
India
Ireland
Israel
Lithuania
Malaysia

Netherlands
Poland
Portugal
South Korea
Spain
Sweden

Turkey
United Kingdom
Ukraine
USA